



OTOMOTİV SANAYİİ DERNEĞİ  
AUTOMOTIVE MANUFACTURERS ASSOCIATION

# OTOMOTİV SEKTÖRÜ AYLIK DEĞERLENDİRME RAPORU KASIM 2021

AUTOMOTIVE INDUSTRY MONTHLY REPORT  
November 2021

OSD "OICA" Üyesidir



O I C A OSD is a Member of "OICA"

	11 - 2020	11 - 2021	%	1 - 11 / 2020	1 - 11 / 2021	%	12/2019 - 11/2020	12/2020 - 11/2021	%
Otomobil Üretimi/P.Cars Production	91.067	70.974	-22,1	762.743	706.265	-7,4	857.734	798.565	-6,9
Toplam Üretim/Total Production	143.264	115.078	-19,7	1.148.240	1.144.356	-0,3	1.284.015	1.293.994	0,8
Otomobil Pazarı/P.Cars Market	64.357	42.982	-33,2	529.388	518.294	-2,1	600.217	599.015	-0,2
Toplam Pazar/Total Market	82.824	64.036	-22,7	688.231	706.166	2,6	781.116	814.085	4,2
Otomobil İthalatı/P.Cars Import	36.923	27.498	-25,5	314.964	313.080	-0,6	355.297	358.566	0,9
Toplam İthalat/Total Import	43.817	35.777	-18,4	372.971	394.332	5,7	422.095	448.352	6,2
Otomobil İhracatı/P.Cars Export	61.381	51.738	-15,7	542.083	507.399	-6,4	614.020	561.932	-8,5
Toplam İhracat/Total Export	101.691	75.892	-25,4	821.909	834.594	1,5	928.258	929.223	0,1
Otomobil İhracatı(\$)/P.Cars Export (\$)	985.042.858,98	823.053.245,11	-16,5	8.298.826.239	8.362.709.445	0,8	9.421.935.305	9.375.971.541	-0,5
Toplam İhracat(\$)/Total Export (\$)*	2.734.249.048,5	2.585.061.611,01	-5,5	23.107.053.996	26.905.552.846	16,4	25.695.666.867	29.740.492.714	15,7

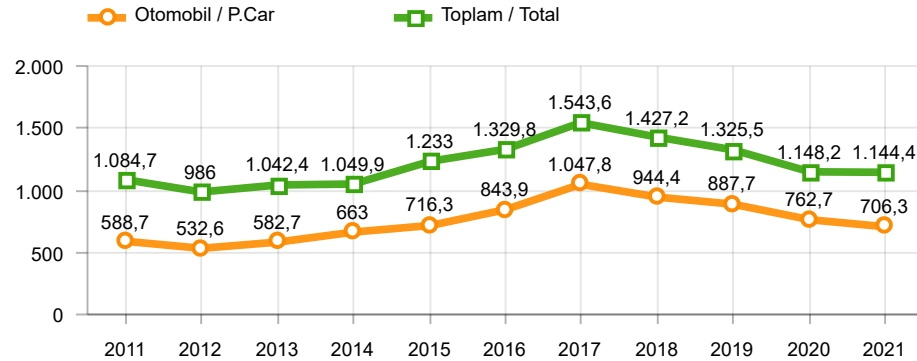
Parametreler/Parameters	11 - 2020	11 - 2021	%	1 - 11 / 2020	1 - 11 / 2021	%	12/2019 - 11/2020	12/2020 - 11/2021	%
ÜFE / PPI	4,1	10,0	-	22,3	51,1	-	10,7	38,9	-
TÜFE / CPI	2,3	3,5	-	13,2	19,8	-	12,0	17,7	-
Sanayi Endeksi / Industry Index	4,3	9,6	-	24,0	49,3	-	10,8	40,5	-
Dolar \$ ** (1 birim)	8,0	10,5	31,5	6,9	8,4	20,9	6,9	8,3	21,7
Euro € ** (1 birim)	9,5	12,0	27,0	7,9	10,0	26,1	7,8	9,9	27,4
Japon Yeni ¥ ** (100 birim)	7,6	9,2	20,3	6,5	7,6	17,8	6,4	7,6	19,3

\*Toplam Sanayi / Total Industry Including Components

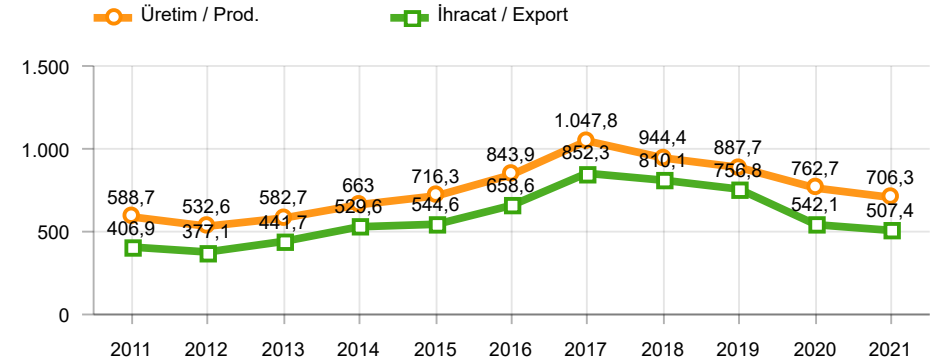
\*\* Ortalama Değerler / Average Values

Araç Tipleri / Types	11 / 2020	11 / 2021	11 % Değişim	1-11 / 2020	1-11 / 2021	1-11 % Değişim
OTOMOBİL / Pass.Car	91.067	70.974	-22,1	762.743	706.265	-7,4
<b>OTOMOBİL Toplam / Pass.Car Total</b>	<b>91.067</b>	<b>70.974</b>	<b>-22,1</b>	<b>762.743</b>	<b>706.265</b>	<b>-7,4</b>
B.KAMYON / H. Truck	2.607	5.336	104,7	18.554	31.083	67,5
K.KAMYON / L. Truck	356	304	-14,6	1.782	3.440	93,0
KAMYONET / Pick Up	43.360	34.093	-21,4	310.301	354.797	14,3
OTOBÜS / Bus	726	562	-22,6	7.270	4.996	-31,3
MİNİBÜS / Minibus	5.024	3.677	-26,8	45.806	41.875	-8,6
MİDİBÜS / Midibus	124	132	6,5	1.784	1.900	6,5
<b>TİCARİ ARAÇLAR Toplam / Commercial Vehicles Total</b>	<b>52.197</b>	<b>44.104</b>	<b>-15,5</b>	<b>385.497</b>	<b>438.091</b>	<b>13,6</b>
<b>TAŞIT ARAÇLARI Toplam / Motor Vehicles Total</b>	<b>143.264</b>	<b>115.078</b>	<b>-19,7</b>	<b>1.148.240</b>	<b>1.144.356</b>	<b>-0,3</b>
TRAKTÖR / F.Tractor	4.609	5.056	9,7	33.120	50.876	53,6
<b>TRAKTÖR Toplam / F.Tractor Total</b>	<b>4.609</b>	<b>5.056</b>	<b>9,7</b>	<b>33.120</b>	<b>50.876</b>	<b>53,6</b>
<b>GENEL TOPLAM / Grand Total</b>	<b>147.873</b>	<b>120.134</b>	<b>-18,8</b>	<b>1.181.360</b>	<b>1.195.232</b>	<b>1,2</b>

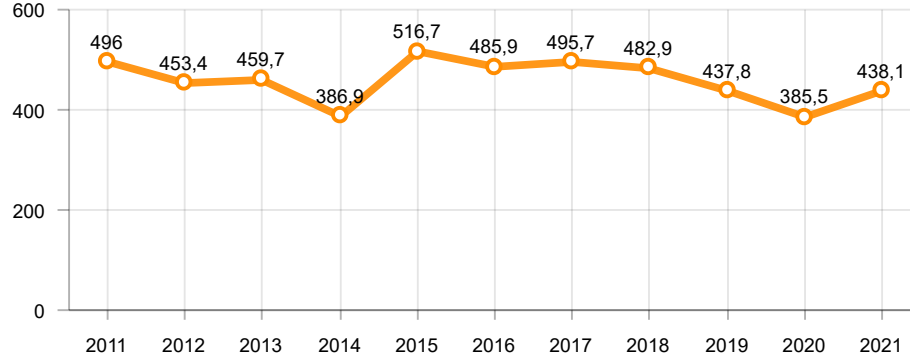
Toplam Üretim ve Otomobil Üretimi (x1000)(OCAK - KASIM)  
Total & P.Cars Production (x1000)(January - November)



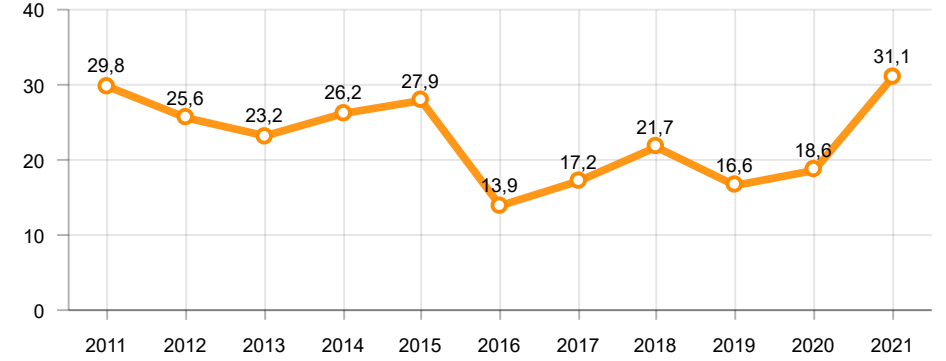
Otomobil Üretimi ve İhracat (x1000)(OCAK - KASIM)  
P.Cars Production & Exports (x1000)(January - November)



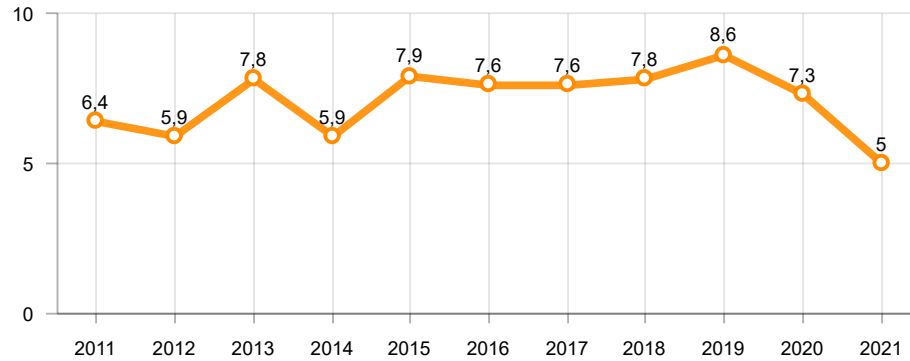
**Ticari Araç Üretimi (x1000)(OCAK - KASIM)**  
Commercial Vehicle Production (x1000)(January - November)



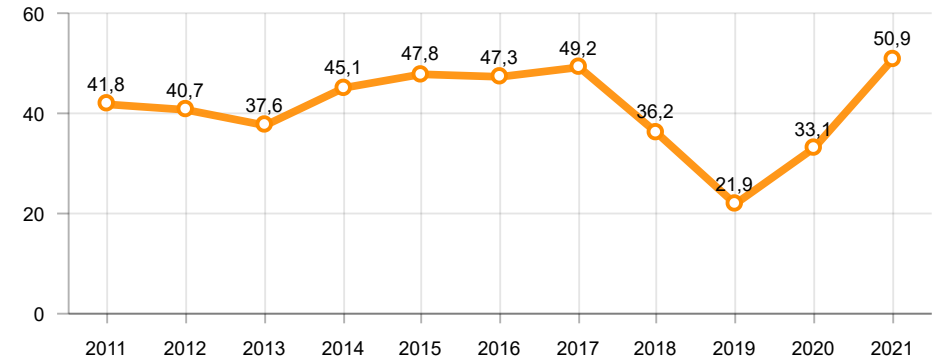
**Büyük Kamyon Üretimi (x1000)(OCAK - KASIM)**  
Heavy Truck Production (x1000)(January - November)

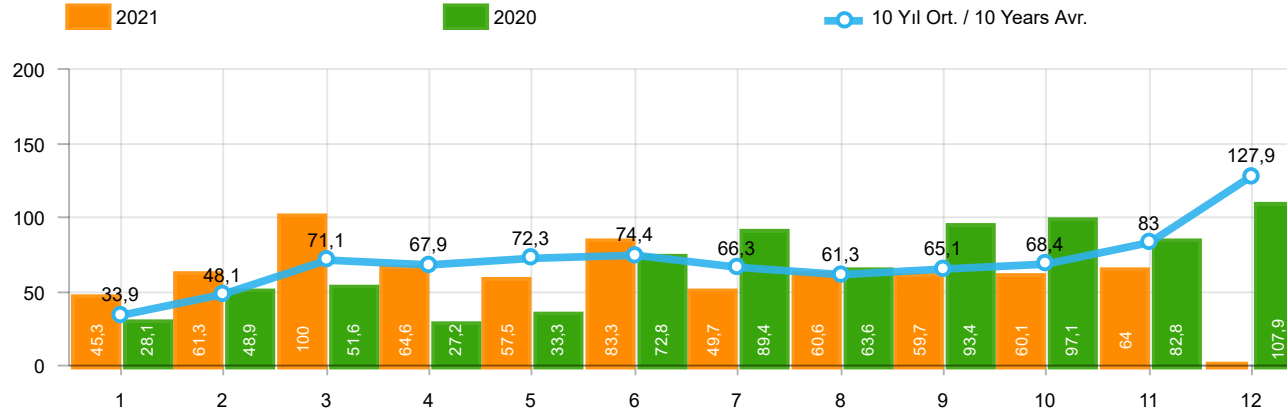


**Otobüs Üretimi (x1000)(OCAK - KASIM)**  
Bus Production (x1000)(January - November)



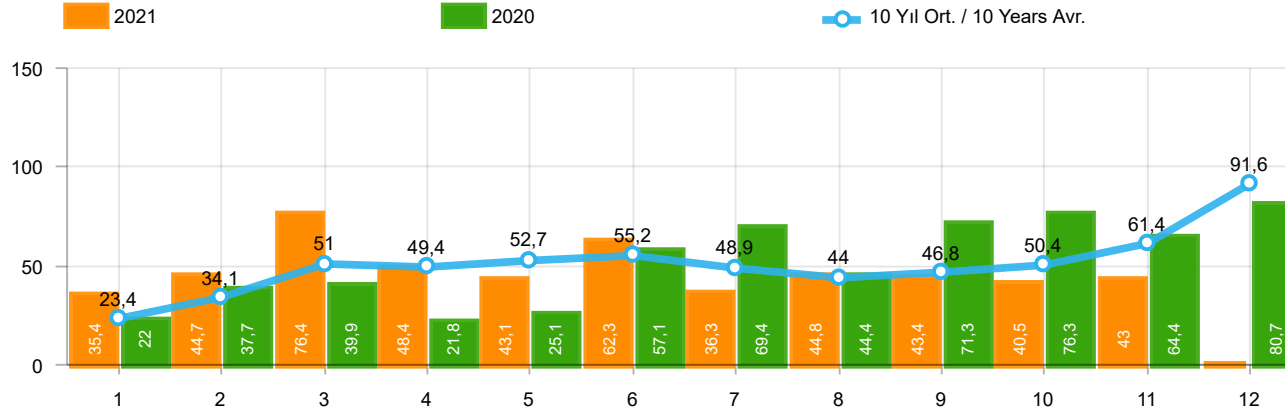
**Traktör Üretimi (x1000)(OCAK - KASIM)**  
F. Tractor Production (x1000)(January - November)





Aylar / Months	10 Yıl Ort. / 10 Years Avr.	2021	%
1	33.938	45.308	33,5
2	48.144	61.325	27,4
3	71.122	100.046	40,7
4	67.887	64.551	-4,9
5	72.255	57.510	-20,4
6	74.447	83.304	11,9
7	66.289	49.732	-25,0
8	61.284	60.573	-1,2
9	65.099	59.717	-8,3
10	68.351	60.064	-12,1
11	82.966	64.036	-22,8
TOPLAM/TOTAL	711.786	706.166	-0,8

Yıl / Year	1	2	3	4	5	6	7	8	9	10	11	12	1-11 Toplam / Total	Toplam / Total	1-11 Yerli / Local	1-11 İthal / Import	İthal Oran / Import %
2011	47.759	62.586	84.045	82.782	85.862	85.992	65.658	61.645	64.313	73.227	67.150	134.468	781.019	915.487	318.300	462.719	59,2
2012	31.552	44.138	69.242	66.559	75.195	75.108	65.444	60.982	73.501	62.933	75.203	121.442	699.857	821.299	262.844	437.013	62,4
2013	37.563	51.133	72.943	77.265	85.835	78.043	75.152	67.662	71.388	60.690	83.470	136.048	761.144	897.192	236.843	524.301	68,9
2014	34.751	37.659	51.312	57.113	62.447	64.295	62.770	63.303	70.764	69.742	84.368	154.843	658.524	813.367	228.777	429.747	65,3
2015	37.256	59.221	89.765	96.182	85.804	91.071	87.358	85.244	67.181	67.086	88.431	164.464	854.599	1.019.063	294.603	559.996	65,5
2016	34.369	54.840	85.932	87.748	97.090	94.666	59.732	73.654	69.413	85.666	125.462	145.706	868.572	1.014.278	279.298	589.274	67,8
2017	36.640	48.585	76.178	78.231	88.066	85.820	84.727	74.818	74.046	94.439	103.772	141.507	845.322	986.829	305.549	539.773	63,9
2018	36.525	48.768	79.600	73.886	74.996	52.788	54.194	35.137	23.915	22.321	59.406	80.014	561.536	641.550	211.588	349.948	62,3
2019	14.847	25.569	50.651	31.944	33.947	43.899	18.442	26.832	43.068	50.288	59.575	92.885	399.062	491.947	171.117	227.945	57,1
2020	28.123	48.948	51.554	27.165	33.308	72.789	89.419	63.570	93.406	97.125	82.824	107.919	688.231	796.150	315.260	372.971	54,2
2021	45.308	61.325	100.046	64.551	57.510	83.304	49.732	60.573	59.717	60.064	64.036		706.166	706.166	311.834	394.332	55,8

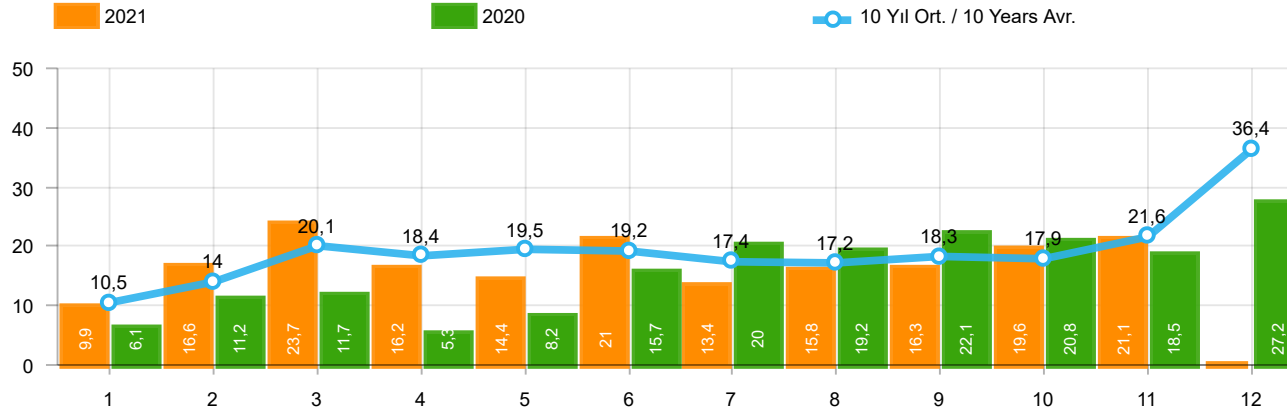


Aylar / Months	10 Yıl Ort / 10 Years Avr.	2021	%
1	23.430	35.358	50,9
2	34.107	44.749	31,2
3	51.047	76.357	49,6
4	49.442	48.375	-2,2
5	52.746	43.138	-18,2
6	55.249	62.348	12,8
7	48.938	36.311	-25,8
8	44.037	44.756	1,6
9	46.756	43.408	-7,2
10	50.408	40.512	-19,6
11	61.356	42.982	-29,9
TOPLAM / TOTAL	517.516	518.294	0,2

Yıl / Year	1	2	3	4	5	6	7	8	9	10	11	12	1-11 Toplam / Total	Toplam / Total	1-11 Yerli / Local	1-11 İthal / Import	İthal Oran / Import %
2011	29.868	39.004	54.023	53.835	56.302	56.714	43.518	38.875	39.964	47.508	44.951	88.957	504.562	593.519	154.660	349.902	69,3
2012	21.077	29.189	47.270	45.645	50.460	50.849	44.531	41.236	49.360	43.440	52.297	80.926	475.354	556.280	127.535	347.819	73,2
2013	25.835	36.814	51.785	56.999	62.383	58.290	55.712	51.611	52.925	46.985	64.117	101.199	563.456	664.655	124.906	438.550	77,8
2014	24.368	27.167	37.812	42.769	46.379	47.278	46.602	45.131	49.262	50.814	59.695	110.054	477.277	587.331	125.260	352.017	73,8
2015	24.498	40.817	61.676	70.211	62.878	67.766	64.218	61.753	47.088	47.954	62.397	114.340	611.256	725.596	153.170	458.086	74,9
2016	23.358	40.588	63.975	65.618	73.832	71.111	45.566	53.977	51.340	63.746	95.783	108.044	648.894	756.938	158.914	489.980	75,5
2017	25.689	34.658	55.616	57.998	65.799	66.164	62.384	54.890	53.423	70.488	75.956	99.694	623.065	722.759	185.161	437.904	70,3
2018	26.611	35.901	59.798	55.108	57.227	41.225	42.024	26.976	17.595	16.809	46.204	60.843	425.478	486.321	141.095	284.383	66,8
2019	10.979	19.205	38.628	24.416	27.126	36.024	15.398	21.544	35.308	39.996	47.803	70.829	316.427	387.256	126.682	189.745	60,0
2020	22.016	37.727	39.887	21.825	25.073	57.067	69.427	44.372	71.296	76.341	64.357	80.721	529.388	610.109	214.424	314.964	59,5
2021	35.358	44.749	76.357	48.375	43.138	62.348	36.311	44.756	43.408	40.512	42.982		518.294	518.294	205.214	313.080	60,4

**Ticari Araç Pazarının Analizi(x1000)(OCAK - KASIM)**  
CV Market Analysis(x1000)(January - November)

OTOMOTİV SEKTÖRÜ AYLIK DEĞERLENDİRME RAPORU 11 / 2021  
Automotive Industry Monthly Report 11 / 2021



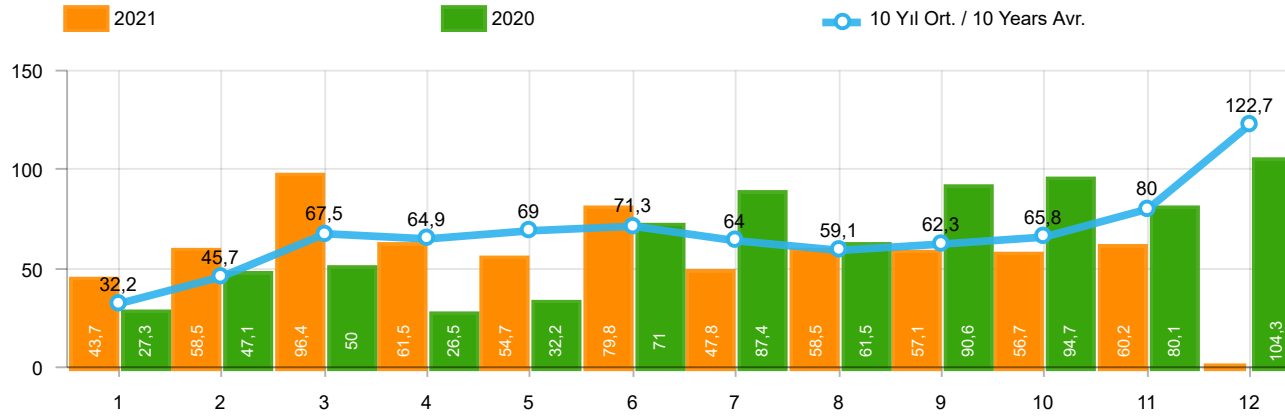
Aylar / Months	10 Yıl Ort. / 10 Years Avr.	2021	%
1	10.509	9.950	-5,3
2	14.038	16.576	18,1
3	20.075	23.689	18,0
4	18.445	16.176	-12,3
5	19.509	14.372	-26,3
6	19.198	20.956	9,2
7	17.352	13.421	-22,7
8	17.248	15.817	-8,3
9	18.343	16.309	-11,1
10	17.944	19.552	9,0
11	21.610	21.054	-2,6
TOPLAM / TOTAL	194.271	187.872	-3,3

Yıl / Year	1	2	3	4	5	6	7	8	9	10	11	12	1-11 Toplam / Total	Toplam / Total	1-11 Yerli / Local	1-11 İthal / Import	İthal Oran / Import %
2011	17.891	23.582	30.022	28.947	29.560	29.278	22.140	22.770	24.349	25.719	22.199	45.511	276.457	321.968	163.640	112.817	40,8
2012	10.475	14.949	21.972	20.914	24.735	24.259	20.913	19.746	24.141	19.493	22.906	40.516	224.503	265.019	135.309	89.194	39,7
2013	11.728	14.319	21.158	20.266	23.452	19.753	19.440	16.051	18.463	13.705	19.353	34.849	197.688	232.537	111.937	85.751	43,4
2014	10.383	10.492	13.500	14.344	16.068	17.017	16.168	18.172	21.502	18.928	24.673	44.789	181.247	226.036	103.517	77.730	42,9
2015	12.758	18.404	28.089	25.971	22.926	23.305	23.140	23.491	20.093	19.132	26.034	50.124	243.343	293.467	141.433	101.910	41,9
2016	11.011	14.252	21.957	22.130	23.258	23.555	14.166	19.677	18.073	21.920	29.679	37.662	219.678	257.340	120.384	99.294	45,2
2017	10.951	13.927	20.562	20.233	22.267	19.656	22.343	19.928	20.623	23.951	27.816	41.813	222.257	264.070	120.388	101.869	45,8
2018	9.914	12.867	19.802	18.778	17.769	11.563	12.170	8.161	6.320	5.512	13.202	19.171	136.058	155.229	70.493	65.565	48,2
2019	3.868	6.364	12.023	7.528	6.821	7.875	3.044	5.288	7.760	10.292	11.772	22.056	82.635	104.691	44.435	38.200	46,2
2020	6.107	11.221	11.667	5.340	8.235	15.722	19.992	19.198	22.110	20.784	18.467	27.198	158.843	186.041	100.836	58.007	36,5
2021	9.950	16.576	23.689	16.176	14.372	20.956	13.421	15.817	16.309	19.552	21.054		187.872	187.872	106.620	81.252	43,2

**Hafif Araç Pazarının Analizi(x1000)(OCAK - KASIM)**  
LV Market Analysis(x1000)(January - November)

OTOMOTİV SEKTÖRÜ AYLIK DEĞERLENDİRME RAPORU 11 / 2021

Automotive Industry Monthly Report 11 / 2021

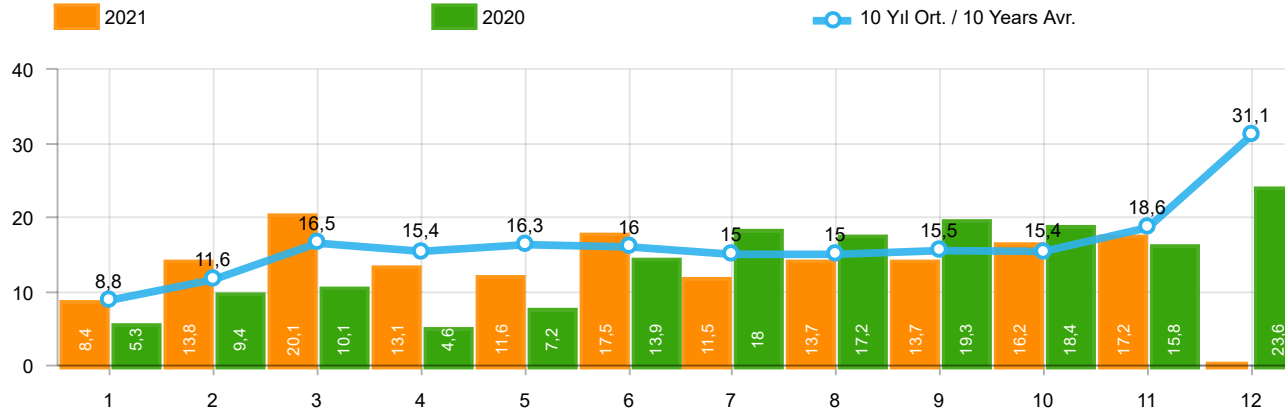


Aylar / Months	10 Yıl Ort. / 10 Years Avr.	2021	%
1	32.200	43.728	35,8
2	45.744	58.504	27,9
3	67.527	96.428	42,8
4	64.856	61.488	-5,2
5	68.997	54.734	-20,7
6	71.295	79.819	12,0
7	63.958	47.849	-25,2
8	59.059	58.454	-1,0
9	62.286	57.141	-8,3
10	65.833	56.746	-13,8
11	79.958	60.216	-24,7
TOPLAM / TOTAL	681.713	675.107	-1,0

Yıl / Year	1	2	3	4	5	6	7	8	9	10	11	12	1-11 Toplam / Total	Toplam / Total	1-11 Yerli / Local	1-11 İthal / Import	İthal Oran / Import %
2011	44.892	58.663	78.403	77.695	80.646	81.573	63.044	58.406	60.129	69.421	63.657	127.910	736.529	864.439	287.751	448.778	60,9
2012	29.545	41.324	64.884	62.949	70.863	71.067	62.304	58.148	69.629	59.938	71.710	115.400	662.361	777.761	235.644	426.717	64,4
2013	35.523	48.307	68.774	73.575	81.468	74.096	71.596	65.043	67.963	58.014	79.301	129.718	723.660	853.378	208.198	515.462	71,2
2014	32.670	35.021	47.581	53.305	58.121	60.163	59.907	60.199	66.531	66.573	80.621	146.989	620.692	767.681	200.483	420.209	67,7
2015	34.615	55.331	83.302	91.602	81.542	86.158	83.836	82.577	64.025	64.255	84.601	156.173	811.844	968.017	263.268	548.576	67,6
2016	32.713	52.825	82.948	84.887	93.904	91.540	58.533	71.556	67.593	83.000	122.309	141.912	841.808	983.720	259.634	582.174	69,2
2017	35.323	46.965	73.802	75.988	85.422	83.658	82.297	72.536	71.352	91.752	100.859	136.240	819.954	956.194	287.420	532.534	64,9
2018	35.076	47.009	76.345	71.126	72.755	51.037	52.734	34.346	23.028	21.571	58.204	77.706	543.231	620.937	199.421	343.810	63,3
2019	14.373	24.875	49.221	30.971	33.016	42.688	17.927	26.246	41.992	49.075	58.176	90.500	388.560	479.060	163.844	224.716	57,8
2020	27.273	47.122	50.008	26.457	32.235	70.973	87.401	61.533	90.619	94.733	80.141	104.293	668.495	772.788	301.934	366.561	54,8
2021	43.728	58.504	96.428	61.488	54.734	79.819	47.849	58.454	57.141	56.746	60.216		675.107	675.107	291.464	383.643	56,8



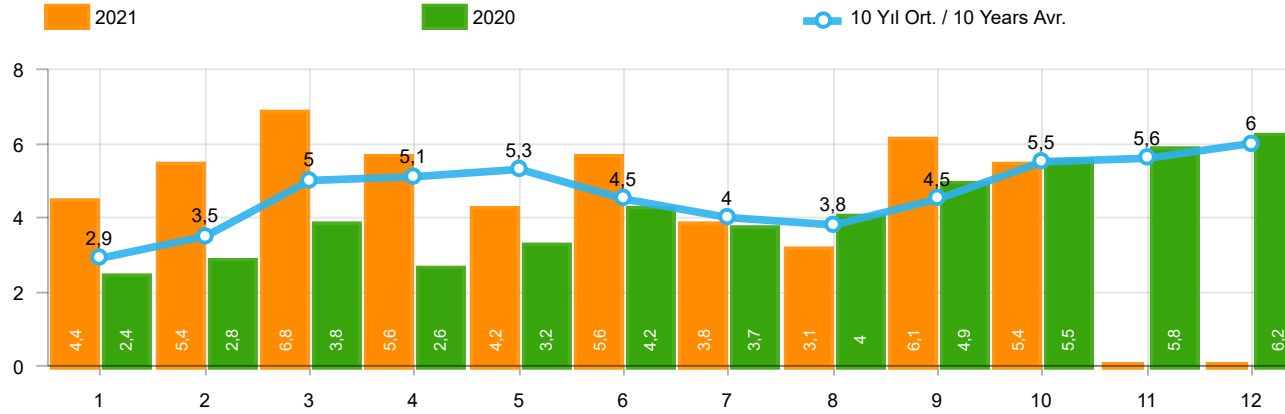
**Hafif Ticari Araç Pazarının Analizi(x1000)(OCAK - KASIM)**  
LCV Market Analysis(x1000)(January - November)



Aylar / Months	10 Yıl Ort / 10 Years Avr.	2021	%
1	8.770	8.370	-4,6
2	11.637	13.755	18,2
3	16.480	20.071	21,8
4	15.413	13.113	-14,9
5	16.251	11.596	-28,6
6	16.047	17.471	8,9
7	15.020	11.538	-23,2
8	15.023	13.698	-8,8
9	15.530	13.733	-11,6
10	15.425	16.234	5,2
11	18.602	17.234	-7,4
TOPLAM / TOTAL	164.198	156.813	-4,5

Yıl / Year	1	2	3	4	5	6	7	8	9	10	11	12	1-11 Toplam / Total	Toplam / Total	1-11 Yerli / Local	1-11 İthal / Import	İthal Oran / Import %
2011	15.024	19.659	24.380	23.860	24.344	24.859	19.526	19.531	20.165	21.913	18.706	38.953	231.967	270.920	133.091	98.876	42,6
2012	8.468	12.135	17.614	17.304	20.403	20.218	17.773	16.912	20.269	16.498	19.413	34.474	187.007	221.481	108.109	78.898	42,2
2013	9.688	11.493	16.989	16.576	19.085	15.806	15.884	13.432	15.038	11.029	15.184	28.519	160.204	188.723	83.292	76.912	48,0
2014	8.302	7.854	9.769	10.536	11.742	12.885	13.305	15.068	17.269	15.759	20.926	36.935	143.415	180.350	75.223	68.192	47,5
2015	10.117	14.514	21.626	21.391	18.664	18.392	19.618	20.824	16.937	16.301	22.204	41.833	200.588	242.421	110.098	90.490	45,1
2016	9.355	12.237	18.973	19.269	20.072	20.429	12.967	17.579	16.253	19.254	26.526	33.868	192.914	226.782	100.720	92.194	47,8
2017	9.634	12.307	18.186	17.990	19.623	17.494	19.913	17.646	17.929	21.264	24.903	36.546	196.889	233.435	102.259	94.630	48,1
2018	8.465	11.108	16.547	16.018	15.528	9.812	10.710	7.370	5.433	4.762	12.000	16.863	117.753	134.616	58.326	59.427	50,5
2019	3.394	5.670	10.593	6.555	5.890	6.664	2.529	4.702	6.684	9.079	10.373	19.671	72.133	91.804	37.162	34.971	48,5
2020	5.257	9.395	10.121	4.632	7.162	13.906	17.974	17.161	19.323	18.392	15.784	23.572	139.107	162.679	87.510	51.597	37,1
2021	8.370	13.755	20.071	13.113	11.596	17.471	11.538	13.698	13.733	16.234	17.234		156.813	156.813	86.250	70.563	45,0

**Traktör Pazarının Analizi(x1000)(OCAK - EKİM)**  
Tractor Market Analysis(x1000)(January - October)



Aylar / Months	10 Yıl Ort / 10 Years Avr.	2021	%
1	2.860	4.411	54,2
2	3.521	5.395	53,2
3	4.990	6.845	37,2
4	5.108	5.581	9,3
5	5.277	4.200	-20,4
6	4.457	5.571	25,0
7	4.011	3.846	-4,1
8	3.825	3.093	-19,1
9	4.484	6.100	36,0
10	5.451	5.351	-1,8
TOPLAM / TOTAL	43.983	50.393	14,6

Yıl / Year	1	2	3	4	5	6	7	8	9	10	11	12	1-10 Toplam / Total	Toplam / Total
2011	2.975	5.242	5.927	5.358	6.016	6.335	4.534	4.051	4.140	5.828	4.943	4.992	50.406	60.341
2012	2.362	1.983	4.348	6.579	6.273	4.569	3.837	3.158	3.618	4.027	4.807	4.757	40.754	50.318
2013	2.161	2.432	4.005	4.585	5.616	3.136	4.574	3.408	4.935	4.762	5.781	6.891	39.614	52.286
2014	2.169	3.512	4.476	4.905	5.094	5.028	4.233	4.920	5.619	5.743	6.250	7.409	45.699	59.358
2015	3.124	3.984	5.460	6.383	6.078	5.748	4.677	5.044	4.765	7.049	6.898	7.564	52.312	66.774
2016	3.739	4.731	7.067	6.546	6.575	5.543	3.833	5.134	4.945	7.372	7.090	7.603	55.485	70.178
2017	3.974	4.964	6.773	6.780	7.057	5.356	5.003	4.396	6.064	7.734	7.457	7.351	58.101	72.909
2018	4.362	4.179	5.925	5.216	4.584	3.146	3.654	2.587	3.541	3.698	3.578	3.886	40.892	48.356
2019	1.311	1.401	2.143	2.126	2.229	1.538	2.039	1.579	2.284	2.828	3.037	3.782	19.478	26.297
2020	2.425	2.778	3.771	2.606	3.244	4.173	3.727	3.974	4.928	5.466	5.831	6.221	37.092	49.144
2021	4.411	5.395	6.845	5.581	4.200	5.571	3.846	3.093	6.100	5.351	-	-	50.393	50.393

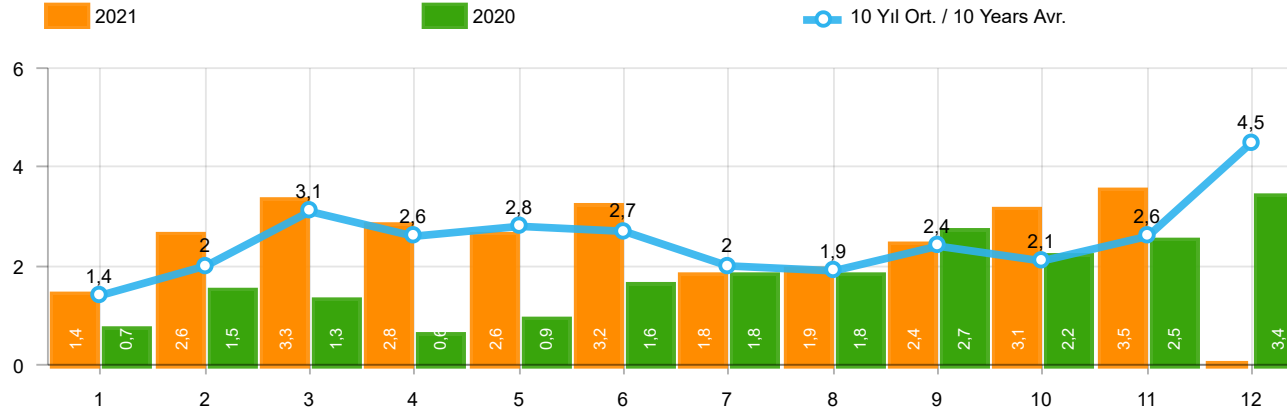
Kaynak: TÜİK trafik kayıtları.

Rakamlar, son iki model yılına ait traktör tescillerinden oluşmaktadır.

Source: Turkish Statistical Institute – Traffic registrations

Data represents the last two model year's farm tractors registration figures

**Kamyon Pazarının Analizi(x1000)(OCAK - KASIM)**  
Truck Market Analysis(x1000)(January - November)

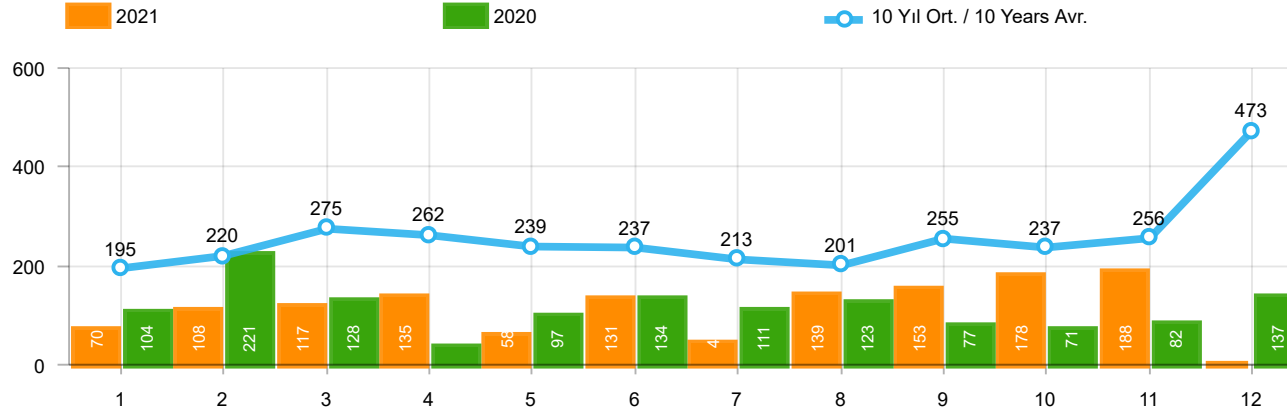


Aylar / Months	10 Yıl Ort / 10 Years Avr.	2021	%
1	1.393	1.366	-2,0
2	2.007	2.633	31,2
3	3.082	3.319	7,7
4	2.560	2.788	8,9
5	2.753	2.617	-4,9
6	2.689	3.238	20,4
7	1.973	1.799	-8,8
8	1.884	1.942	3,1
9	2.424	2.377	-1,9
10	2.131	3.067	43,9
11	2.598	3.499	34,7
TOPLAM / TOTAL	25.492	28.645	12,4

Yıl / Year	1	2	3	4	5	6	7	8	9	10	11	12	1-11 Toplam / Total	Toplam / Total	1-11 Yerli / Local	1-11 İthal / Import	İthal Oran / Import %
2011	2.651	3.544	5.142	4.503	4.563	3.852	2.261	2.745	3.784	3.400	3.149	5.712	39.594	45.306	25.738	13.856	35,0
2012	1.703	2.454	3.866	3.209	3.678	3.540	2.750	2.403	3.296	2.497	3.154	5.300	32.550	37.850	22.288	10.262	31,5
2013	1.484	2.113	3.343	2.925	3.504	3.186	2.777	2.103	2.875	2.086	3.631	5.444	30.027	35.471	21.215	8.812	29,3
2014	1.522	2.065	3.094	3.224	3.727	3.726	2.578	2.783	3.708	2.858	3.384	6.869	32.669	39.538	23.288	9.381	28,7
2015	2.215	3.346	5.699	3.729	3.600	4.253	2.922	2.211	2.687	2.266	3.146	7.307	36.074	43.381	24.723	11.351	31,5
2016	1.167	1.648	2.515	2.319	2.711	2.623	984	1.796	1.438	2.238	2.485	3.127	21.924	25.051	14.855	7.069	32,2
2017	931	1.290	1.982	1.888	2.184	1.891	1.974	1.860	2.284	2.188	2.487	4.438	20.959	25.397	13.734	7.225	34,5
2018	1.237	1.552	2.630	2.328	1.909	1.272	1.235	603	653	488	905	1.695	14.812	16.507	8.685	6.127	41,4
2019	342	579	1.255	842	728	981	435	497	854	1.047	1.100	2.087	8.660	10.747	5.431	3.229	37,3
2020	682	1.475	1.290	628	921	1.570	1.809	1.835	2.660	2.239	2.537	3.358	17.646	21.004	11.236	6.410	36,3
2021	1.366	2.633	3.319	2.788	2.617	3.238	1.799	1.942	2.377	3.067	3.499		28.645	28.645	17.956	10.689	37,3

**Midibüs Pazarının Analizi(OCAK - KASIM)**  
Midibus Market Analysis(January - November)

OTOMOTİV SEKTÖRÜ AYLIK DEĞERLENDİRME RAPORU 11 / 2021  
Automotive Industry Monthly Report 11 / 2021

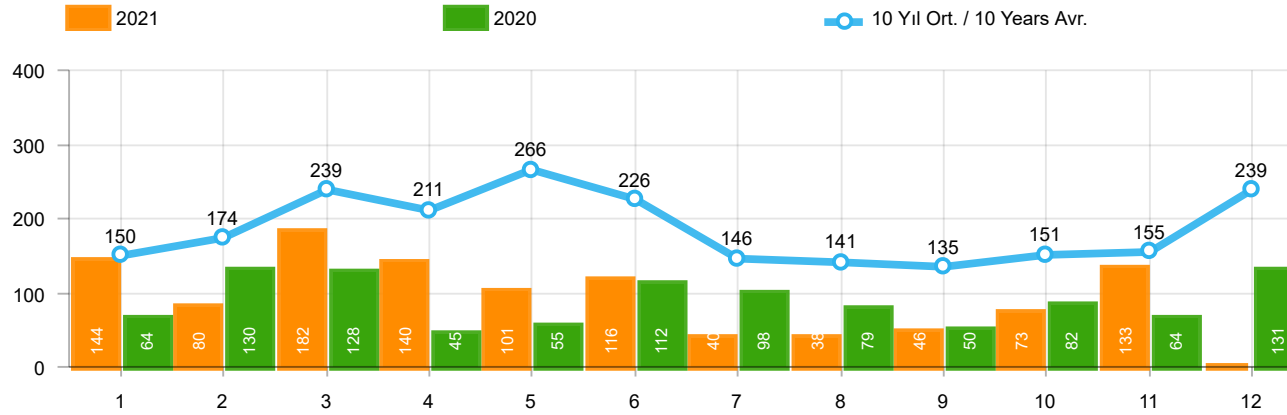


Aylar / Months	10 Yıl Ort. / 10 Years Avr.	2021	%
1	195	70	-64,1
2	220	108	-50,9
3	275	117	-57,4
4	262	135	-48,5
5	239	58	-75,7
6	237	131	-44,6
7	213	44	-79,3
8	201	139	-31,0
9	255	153	-39,9
10	237	178	-24,8
11	256	188	-26,5
TOPLAM / TOTAL	2.588	1.321	-49,0

Yıl / Year	1	2	3	4	5	6	7	8	9	10	11	12	1-11 Toplam / Total	Toplam / Total
2011	124	167	267	260	241	233	205	280	270	230	168	525	2.445	2.970
2012	179	257	277	229	257	239	216	249	325	269	189	398	2.686	3.084
2013	191	268	289	276	283	241	367	235	305	392	415	697	3.262	3.959
2014	360	394	384	333	294	258	216	229	395	220	266	653	3.349	4.002
2015	280	322	451	561	372	405	389	253	316	394	325	621	4.068	4.689
2016	309	158	251	302	261	196	139	220	241	230	354	431	2.661	3.092
2017	212	211	227	231	272	156	250	235	318	268	317	594	2.697	3.291
2018	134	142	410	296	207	315	180	146	160	155	184	425	2.329	2.754
2019	57	61	63	96	106	189	55	44	138	138	257	244	1.204	1.448
2020	104	221	128	35	97	134	111	123	77	71	82	137	1.183	1.320
2021	70	108	117	135	58	131	44	139	153	178	188		1.321	1.321

**Otobüs Pazarının Analizi(OCAK - KASIM)**  
Otobus Market Analysis(January - November)

OTOMOTİV SEKTÖRÜ AYLIK DEĞERLENDİRME RAPORU 11 / 2021  
Automotive Industry Monthly Report 11 / 2021

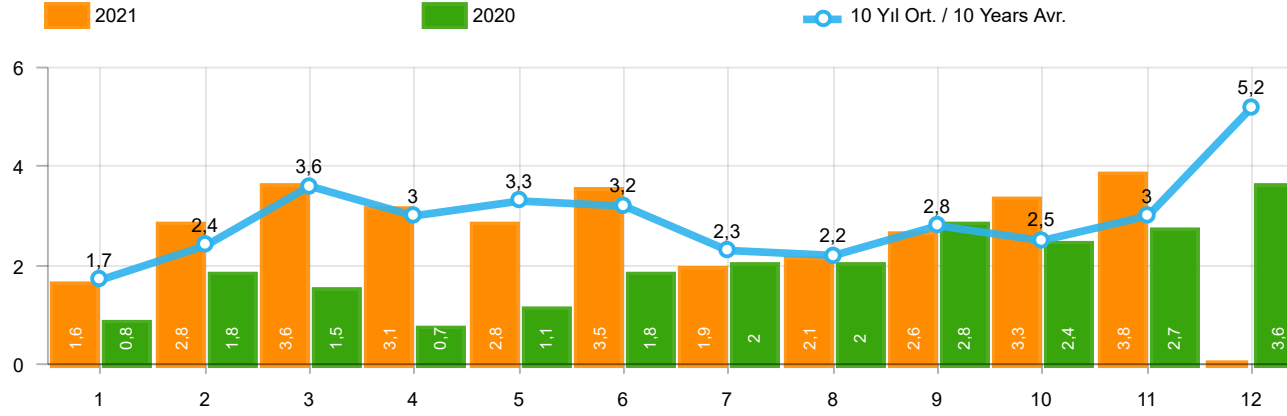


Aylar / Months	10 Yıl Ort. / 10 Years Avr.	2021	%
1	150	144	-3,9
2	174	80	-54,0
3	239	182	-23,9
4	211	140	-33,5
5	266	101	-62,1
6	226	116	-48,6
7	146	40	-72,7
8	141	38	-73,0
9	135	46	-65,9
10	151	73	-51,7
11	155	133	-14,0
TOPLAM / TOTAL	1.993	1.093	-45,2

Yıl / Year	1	2	3	4	5	6	7	8	9	10	11	12	1-11 Toplam / Total	Toplam / Total	1-11 Yerli / Local	1-11 İthal / Import	İthal Oran / Import %
2011	92	212	233	324	412	334	148	214	130	176	176	321	2.451	2.772	2.366	85	3,5
2012	125	103	215	172	397	262	174	182	251	229	150	344	2.260	2.604	2.226	34	1,5
2013	365	445	537	489	580	520	412	281	245	198	123	189	4.195	4.384	4.168	27	0,6
2014	199	179	253	251	305	148	69	92	130	91	97	332	1.814	2.146	1.657	157	8,7
2015	146	222	313	290	290	255	211	203	153	171	359	363	2.613	2.976	2.544	69	2,6
2016	180	209	218	240	214	307	76	82	141	198	314	236	2.179	2.415	2.148	31	1,4
2017	174	119	167	124	188	115	206	187	92	231	109	235	1.712	1.947	1.698	14	0,8
2018	78	65	215	136	125	164	45	42	74	107	113	188	1.164	1.352	1.153	11	0,9
2019	75	54	112	35	97	41	25	45	84	28	42	54	638	692	638	-	-
2020	64	130	128	45	55	112	98	79	50	82	64	131	907	1.038	907	-	-
2021	144	80	182	140	101	116	40	38	46	73	133		1.093	1.093	1.093	-	-

**Ağır Ticari Araç Pazarının Analizi(x1000)(OCAK - KASIM)**  
HCV Market Analysis(x1000)(January - November)

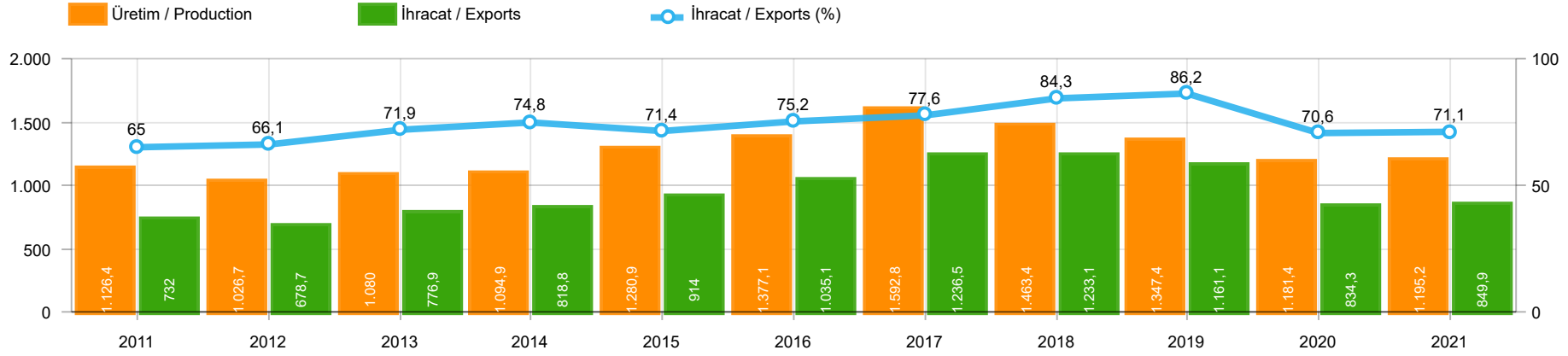
OTOMOTİV SEKTÖRÜ AYLIK DEĞERLENDİRME RAPORU 11 / 2021  
Automotive Industry Monthly Report 11 / 2021



Aylar / Months	10 Yıl Ort. / 10 Years Avr.	2021	%
1	1.738	1.580	-9,1
2	2.401	2.821	17,5
3	3.595	3.618	0,6
4	3.032	3.063	1,0
5	3.258	2.776	-14,8
6	3.152	3.485	10,6
7	2.332	1.883	-19,2
8	2.226	2.119	-4,8
9	2.813	2.576	-8,4
10	2.519	3.318	31,7
11	3.008	3.820	27,0
TOPLAM / TOTAL	30.073	31.059	3,3

Yıl / Year	1	2	3	4	5	6	7	8	9	10	11	12	1-11 Toplam / Total	Toplam / Total	1-11 Yerli / Local	1-11 İthal / Import	İthal Oran / Import %
2011	2.867	3.923	5.642	5.087	5.216	4.419	2.614	3.239	4.184	3.806	3.493	6.558	44.490	51.048	30.549	13.941	31,3
2012	2.007	2.814	4.358	3.610	4.332	4.041	3.140	2.834	3.872	2.995	3.493	6.042	37.496	43.538	27.200	10.296	27,5
2013	2.040	2.826	4.169	3.690	4.367	3.947	3.556	2.619	3.425	2.676	4.169	6.330	37.484	43.814	28.645	8.839	23,6
2014	2.081	2.638	3.731	3.808	4.326	4.132	2.863	3.104	4.233	3.169	3.747	7.854	37.832	45.686	28.294	9.538	25,2
2015	2.641	3.890	6.463	4.580	4.262	4.913	3.522	2.667	3.156	2.831	3.830	8.291	42.755	51.046	31.335	11.420	26,7
2016	1.656	2.015	2.984	2.861	3.186	3.126	1.199	2.098	1.820	2.666	3.153	3.794	26.764	30.558	19.664	7.100	26,5
2017	1.317	1.620	2.376	2.243	2.644	2.162	2.430	2.282	2.694	2.687	2.913	5.267	25.368	30.635	18.129	7.239	28,5
2018	1.449	1.759	3.255	2.760	2.241	1.751	1.460	791	887	750	1.202	2.308	18.305	20.613	12.167	6.138	33,5
2019	474	694	1.430	973	931	1.211	515	586	1.076	1.213	1.399	2.385	10.502	12.887	7.273	3.229	30,7
2020	850	1.826	1.546	708	1.073	1.816	2.018	2.037	2.787	2.392	2.683	3.626	19.736	23.362	13.326	6.410	32,5
2021	1.580	2.821	3.618	3.063	2.776	3.485	1.883	2.119	2.576	3.318	3.820		31.059	31.059	20.370	10.689	34,4

**İhracat / Üretim(x1000) (2011 - 2021 / 1 - 11)(Traktör Dahil)**  
Exports / Production(x1000) (2011 - 2021 / 1 - 11)(Including Tractors)



	2011	2012	2013	2014	2015	2016	2017	2018	2019	2020	2021
İhracat/Export	731.990	678.687	776.884	818.801	913.993	1.035.057	1.236.515	1.233.074	1.161.130	834.310	849.911
Üretim/Production	1.126.428	1.026.685	1.080.004	1.094.928	1.280.871	1.377.078	1.592.781	1.463.460	1.347.371	1.181.360	1.195.232
İhracat/Exports (%)	65	66,1	71,9	74,8	71,4	75,2	77,6	84,3	86,2	70,6	71,1

**Taşıt Araçları İhracatı (2019 - 2021)**  
Motor Vehicle Exports (2019 - 2021)

SEKTÖR / SECTOR	2019	2020	1/11-2020	1/11-2021	2021/2020 %
OTOMOBİL / Pass.Car	828.744	596.616	542.083	507.399	-6,4
<b>OTOMOBİL TOPLAM / Pass. Car Total</b>	<b>828.744</b>	<b>596.616</b>	<b>542.083</b>	<b>507.399</b>	<b>-6,4</b>
KAMYON / Truck	14.824	10.333	9.408	15.397	63,7
KAMYONET / Pick Up	349.490	263.767	230.285	272.558	18,4
OTOBÜS / Bus	9.001	6.886	6.315	4.264	-32,5
MİNİBÜS / Minibus	49.283	38.296	33.315	34.133	2,5
MİDİBÜS / Midibus	1.244	640	503	843	67,6
<b>TİCARİ ARAÇLAR TOPLAM / Commercial Vehicle Total</b>	<b>423.842</b>	<b>319.922</b>	<b>279.826</b>	<b>327.195</b>	<b>16,9</b>
<b>TAŞIT ARAÇLARI TOPLAM / Motor Vehicles Total</b>	<b>1.252.586</b>	<b>916.538</b>	<b>821.909</b>	<b>834.594</b>	<b>1,5</b>
TRAKTÖR / F.Tractor	15.844	13.495	12.401	15.317	23,5
<b>TRAKTÖR TOPLAM / F.Tractor Total</b>	<b>15.844</b>	<b>13.495</b>	<b>12.401</b>	<b>15.317</b>	<b>23,5</b>
<b>GENEL TOPLAM / GRAND TOTAL</b>	<b>1.268.430</b>	<b>930.033</b>	<b>834.310</b>	<b>849.911</b>	<b>1,9</b>

**Üretici Bazında İhracat (adet)**  
Exports by Manufacturer (unit)

Üreticiler / Manufacturers	2019	2020	1-11 / 2020	1-11 / 2021
A.I.O.S.	1.433	510	448	943
FORD OTOSAN	333.734	254.003	221.585	252.526
HATTAT TRAKTÖR	637	942	745	745
HONDA TÜRKİYE	7.528	6.421	6.225	2.305
HYUNDAI ASSAN	169.803	128.003	117.588	130.137
KARSAN	2.713	755	563	1.673
M. BENZ TÜRK	16.324	11.184	10.319	12.418
MAN TÜRKİYE	2.892	2.628	2.463	1.580
OTOKAR	1.156	862	683	586
OYAK RENAULT	295.275	211.954	194.371	162.701
TEMSA	602	243	213	495
TOFAŞ	194.107	117.886	107.025	100.694
TOYOTA	227.019	182.089	160.426	168.536
TÜRK TRAKTÖR	15.207	12.553	11.656	14.572
<b>GENEL TOPLAM / Grand Total</b>	<b>1.268.430</b>	<b>930.033</b>	<b>834.310</b>	<b>849.911</b>



### Otomotiv Ana ve Yan Sanayii İhracatı (ABD \$)

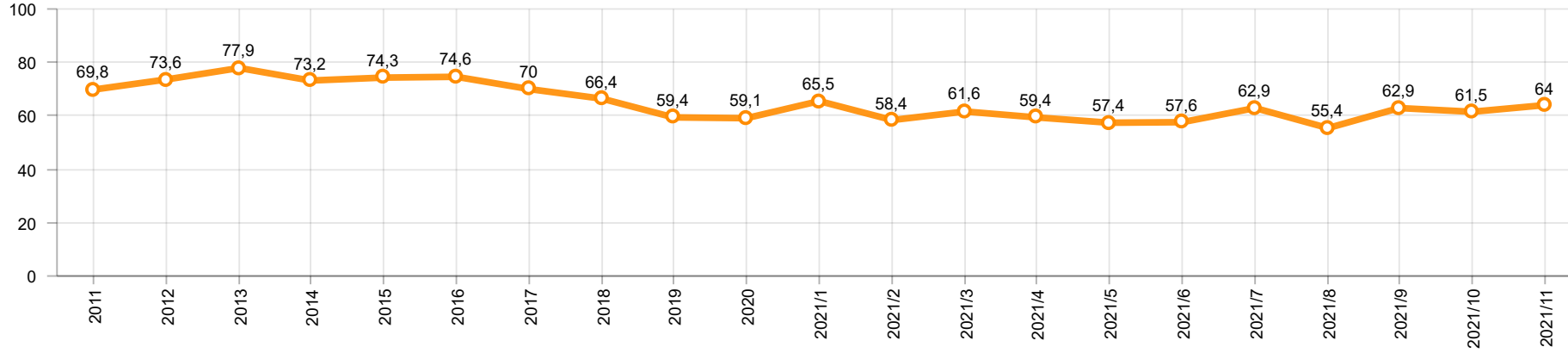
CBU and CKD Exports - \$

Sektör / Sector	2019	2020	OCAK - KASIM / January - November 2020	OCAK - KASIM / January - November 2021	2021 / 2020 %
<b>Toplam Yan Sanayi / Total Component Industry</b>	<b>10.616.350.211,16</b>	<b>9.454.364.326,61</b>	<b>8.510.312.531,85</b>	<b>10.804.376.009,09</b>	<b>27,0</b>
İç ve Dış Lastik / Tyres	1.479.050.683,54	1.248.005.046,63	1.142.165.712,35	1.498.201.565,94	31,2
Emniyet Camı / Safety Glasses	150.643.773,04	140.363.576,74	125.940.062,17	183.388.640,72	45,6
Motor / Engine	518.051.730,93	461.449.027,72	444.777.033,97	283.723.147,7	-36,2
Akümülatör / Batteries	397.317.829,27	353.038.607,91	311.457.568,26	450.454.140,08	44,6
Diğer Aksam ve Parça / Spare Parts&Components	8.071.286.194,38	7.251.508.067,61	6.485.972.155,1	8.388.608.514,65	29,3
<b>Toplam Ana Sanayi / Total Vehicle Industry</b>	<b>20.613.753.125,48</b>	<b>16.491.127.868,9</b>	<b>14.596.741.464,59</b>	<b>16.101.176.837,33</b>	<b>10,3</b>
Otobüs / Bus	1.759.421.232,04	1.300.660.458,98	1.180.769.859,51	907.231.261,35	-23,2
Midibüs-Minibüs / Midibus-Minibus	222.922.951,87	188.434.401,85	174.309.367,76	166.499.454,66	-4,5
Otomobil / P.Cars	11.864.815.315,9	9.312.088.333,82	8.298.826.238,72	8.362.709.445,41	0,8
Kamyon-Kamyonet / Truck-Pick Up&Van	4.945.359.113,74	4.254.957.839,91	3.665.323.700,53	4.786.063.992,6	30,6
Römork ve Yarı Römork / Trailer-Semi Trailer	503.203.636,07	417.420.859,24	365.223.679,11	533.835.647,45	46,2
Çekici / Tractor	839.891.842,8	602.899.223,51	545.492.396,35	876.703.869,29	60,7
Tarım Traktörü / Farm Tractor	478.139.033,06	414.666.751,59	366.796.222,61	468.133.166,57	27,6
<b>Toplam / Total</b>	<b>31.230.103.336,64</b>	<b>25.945.492.195,51</b>	<b>23.107.053.996,44</b>	<b>26.905.552.846,42</b>	<b>16,4</b>

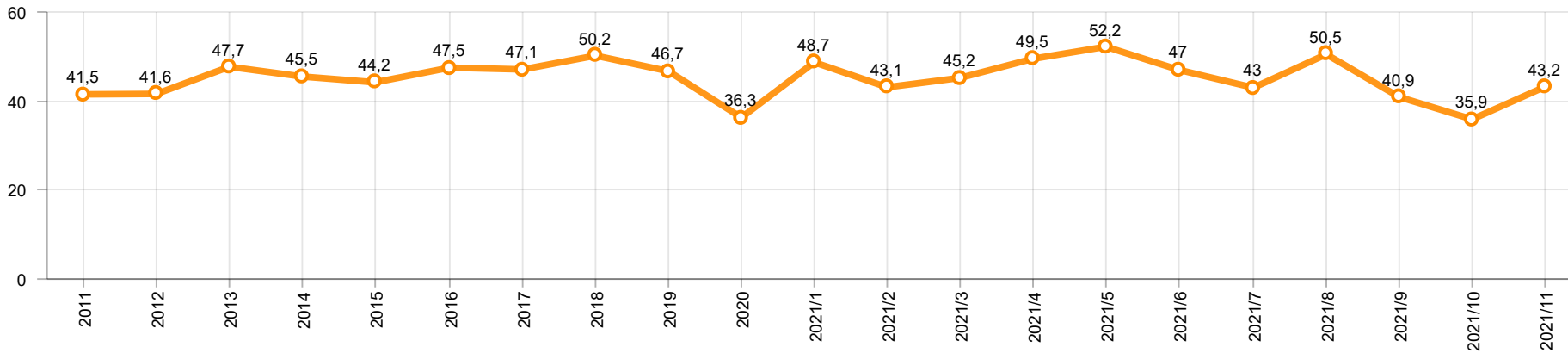
Kaynak: Uludağ İhracatçı Birlikleri . ÜİB tarafından OSD için özel olarak analiz edilen Otomotiv İhracatı kapsamında; ÜİB Türkiye Geneli Otomotiv Endüstrisi sınıflandırmasına kıyasla “Römork ve Yarı Römork” , “Tarım Traktörü” verileri dahil edilmekte; “Kullanılmış Araçlar” ,”İki Tekerlekli Taşıtlar” , “Demiryolu Taşıtları” hariç tutulmaktadır.

Source: Uludağ Exporters Association – Special Analyze for OSD.Compared to Turkish General Automotive Industry classification, this special analyze includes; farms tractors, trailers and semi-trailers, does not include; used vehicles, two-wheeled vehicles and railway vehicles

**Otomobil Pazarında İthalatın Payı (%)**  
Import Share in P.Car Market (%)



**Hafif Ticari Araçlar Pazarında İthalatın Payı (%)**  
Import Share in LCV Market (%)



Araç Tipleri / Vehicle Types	1	2	3	4	5	6	7	8	9	10	11	12	Toplam / Total
<b>OTOMOBİL - Pass.Car</b>	<b>48.049</b>	<b>50.384</b>	<b>57.024</b>	<b>56.599</b>	<b>44.565</b>	<b>40.506</b>	<b>26.231</b>	<b>42.346</b>	<b>35.733</b>	<b>54.224</b>	<b>51.738</b>		<b>507.399</b>
KAMYON - H. Truck	986	1.332	2.069	1.441	796	973	683	1.106	964	1.766	3.167		<b>15.283</b>
K.KAMYON - L. Truck	12	12	6	6	6	24	-	48	-	-	-		<b>114</b>
KAMYONET - Pick Up	25.164	31.489	31.340	18.079	5.971	25.976	20.322	33.622	34.933	27.278	18.384		<b>272.558</b>
OTOBÜS - Bus	121	258	303	344	398	512	483	455	334	462	594		<b>4.264</b>
MİNİBÜS - Minibus	3.159	4.405	4.836	1.605	58	2.405	3.501	4.939	4.102	3.202	1.921		<b>34.133</b>
MİDİBÜS - Midibus	77	28	57	39	53	61	56	105	184	95	88		<b>843</b>
<b>TİCARİ ARAÇLAR TOPLAMI - CV Total</b>	<b>29.519</b>	<b>37.524</b>	<b>38.611</b>	<b>21.514</b>	<b>7.282</b>	<b>29.951</b>	<b>25.045</b>	<b>40.275</b>	<b>40.517</b>	<b>32.803</b>	<b>24.154</b>		<b>327.195</b>
<b>TAŞIT ARAÇLARI TOPLAMI - MV Total</b>	<b>77.568</b>	<b>87.908</b>	<b>95.635</b>	<b>78.113</b>	<b>51.847</b>	<b>70.457</b>	<b>51.276</b>	<b>82.621</b>	<b>76.250</b>	<b>87.027</b>	<b>75.892</b>		<b>834.594</b>
TRAKTÖR - F.Tractor	1.235	1.080	1.311	1.356	1.231	1.687	1.282	867	1.924	1.564	1.780		<b>15.317</b>
<b>GENEL TOPLAM - Grand Total</b>	<b>78.803</b>	<b>88.988</b>	<b>96.946</b>	<b>79.469</b>	<b>53.078</b>	<b>72.144</b>	<b>52.558</b>	<b>83.488</b>	<b>78.174</b>	<b>88.591</b>	<b>77.672</b>		<b>849.911</b>

**Otomobil / P.Car**

Firmalar / Firms	1	2	3	4	5	6	7	8	9	10	11	12	Toplam / Total
FORD OTOSAN	378	669	166	222	36	19	169	53	97	107	71	-	<b>1.987</b>
HONDA TÜRKİYE	149	118	243	120	179	211	240	30	990	25	-	-	<b>2.305</b>
HYUNDAI ASSAN	9.920	10.963	15.565	12.209	10.400	14.080	11.400	13.600	11.100	11.300	9.600	-	<b>130.137</b>
OYAK RENAULT	14.070	15.130	17.913	20.650	15.838	10.149	9	20.754	10.468	17.304	20.416	-	<b>162.701</b>
TOFAŞ	4.038	6.889	4.852	6.345	5.126	4.278	566	1.255	1.590	4.542	2.252	-	<b>41.733</b>
TOYOTA	19.494	16.615	18.285	17.053	12.986	11.769	13.847	6.654	11.488	20.946	19.399	-	<b>168.536</b>
<b>TOPLAM - Total</b>	<b>48.049</b>	<b>50.384</b>	<b>57.024</b>	<b>56.599</b>	<b>44.565</b>	<b>40.506</b>	<b>26.231</b>	<b>42.346</b>	<b>35.733</b>	<b>54.224</b>	<b>51.738</b>	-	<b>507.399</b>

**Kamyonet / Pick-up**

Firmalar / Firms	1	2	3	4	5	6	7	8	9	10	11	12	Toplam / Total
A.I.O.S.	-	-	-	-	-	-	-	-	-	-	-	-	-
FORD OTOSAN	19.856	24.107	26.608	13.013	1.598	21.400	18.276	28.260	25.117	20.879	12.895	-	<b>212.009</b>
KARSAN	22	16	4	-	74	68	140	305	257	334	218	-	<b>1.438</b>
OTOKAR	-	37	14	24	1	10	14	-	3	47	-	-	<b>150</b>
TOFAŞ	5.286	7.329	4.714	5.042	4.298	4.498	1.892	5.057	9.556	6.018	5.271	-	<b>58.961</b>
<b>TOPLAM - Total</b>	<b>25.164</b>	<b>31.489</b>	<b>31.340</b>	<b>18.079</b>	<b>5.971</b>	<b>25.976</b>	<b>20.322</b>	<b>33.622</b>	<b>34.933</b>	<b>27.278</b>	<b>18.384</b>	-	<b>272.558</b>

**Minibüs / Minibus**

Firmalar / Firms	1	2	3	4	5	6	7	8	9	10	11	12	Toplam / Total
FORD OTOSAN	3.159	4.404	4.826	1.598	58	2.394	3.501	4.915	4.044	3.197	1.914	-	<b>34.010</b>
KARSAN	-	1	10	7	-	11	-	24	58	5	7	-	<b>123</b>
<b>TOPLAM - Total</b>	<b>3.159</b>	<b>4.405</b>	<b>4.836</b>	<b>1.605</b>	<b>58</b>	<b>2.405</b>	<b>3.501</b>	<b>4.939</b>	<b>4.102</b>	<b>3.202</b>	<b>1.921</b>	-	<b>34.133</b>

**Kamyon / Truck**

Firmalar / Firms	1	2	3	4	5	6	7	8	9	10	11	12	Toplam / Total
A.I.O.S.	12	12	6	6	6	24	-	48	-	-	-	-	114
FORD OTOSAN	214	253	372	376	415	214	199	601	649	517	710	-	4.520
KARSAN	-	-	-	-	-	-	-	-	-	-	-	-	-
M. BENZ TÜRK	772	1.079	1.697	1.065	381	759	484	505	315	1.249	2.457	-	10.763
OTOKAR	-	-	-	-	-	-	-	-	-	-	-	-	-
TEMSA	-	-	-	-	-	-	-	-	-	-	-	-	-
TOPLAM - Total	998	1.344	2.075	1.447	802	997	683	1.154	964	1.766	3.167	-	15.397

**Midibüs / Midibus**

Firmalar / Firms	1	2	3	4	5	6	7	8	9	10	11	12	Toplam / Total
A.I.O.S.	31	21	47	11	26	22	30	40	104	69	56	-	457
KARSAN	-	-	3	1	5	3	1	26	62	-	10	-	111
OTOKAR	44	6	4	22	4	19	20	28	11	17	17	-	192
TEMSA	2	1	3	5	18	17	5	11	7	9	5	-	83
TOPLAM - Total	77	28	57	39	53	61	56	105	184	95	88	-	843

**Otobüs / Bus**

Firmalar / Firms	1	2	3	4	5	6	7	8	9	10	11	12	Toplam / Total
A.I.O.S.	8	13	1	14	27	20	17	30	61	94	87	-	372
KARSAN	-	-	-	-	-	-	-	-	1	-	-	-	1
M. BENZ TÜRK	11	106	46	72	176	243	256	158	181	165	241	-	1.655
MAN TÜRKİYE	42	102	221	226	146	192	145	125	50	158	173	-	1.580
OTOKAR	47	8	13	6	19	23	18	81	10	4	15	-	244
TEMSA	13	29	22	26	30	34	47	61	31	41	78	-	412
TOPLAM - Total	121	258	303	344	398	512	483	455	334	462	594	-	4.264

**Traktör / F.Tractor**

Firmalar / Firms	1	2	3	4	5	6	7	8	9	10	11	12	Toplam / Total
HATTAT TRAKTÖR	20	50	69	52	72	60	65	117	102	60	78	-	745
TÜRK TRAKTÖR	1.215	1.030	1.242	1.304	1.159	1.627	1.217	750	1.822	1.504	1.702	-	14.572
TOPLAM - Total	1.235	1.080	1.311	1.356	1.231	1.687	1.282	867	1.924	1.564	1.780	-	15.317

Firmalar / Firms	2020 Toplam / Total	1	2	3	4	5	6	7	8	9	10	11	12	Toplam / Total
Alfa Romeo	214	76	20	11	9	8	21	12	12	7	2	4	-	182
Aston Martin	17	3	2	4	3	2	3	2	3	2	2	4	-	30
Audi	18.168	839	747	1.899	1.040	915	1.439	1.047	1.525	1.282	988	1.010	-	12.731
Bentley	11	-	1	-	4	1	1	1	-	1	1	1	-	11
BMW	14.270	613	937	1.822	1.349	904	1.319	1.105	1.429	1.416	1.127	1.484	-	13.505
Citroen	22.254	1.188	1.702	2.988	1.720	1.791	1.268	947	1.640	2.179	2.325	3.035	-	20.783
CUPRA	-	-	-	-	55	17	5	12	18	32	41	67	-	247
Dacia	25.910	1.396	1.611	3.540	2.500	1.605	3.191	2.999	2.745	2.906	1.922	1.425	-	25.840
DFSK	-	-	-	-	2	3	12	9	17	5	2	3	-	53
DS	694	20	35	80	15	106	92	23	83	121	71	133	-	779
Ferrari	21	1	-	5	2	4	2	2	1	1	1	2	-	21
Fiat	1.298	57	124	200	118	88	88	55	80	79	67	112	-	1.068
Ford	23.897	1.397	891	1.852	1.204	953	1.050	544	1.318	452	1.374	368	-	11.403
Honda	2.337	249	173	381	189	194	303	162	168	918	1.206	2.281	-	6.224
Hyundai	19.035	644	723	1.382	1.020	760	1.481	1.216	1.601	1.853	1.764	1.705	-	14.149
Jaguar	265	4	2	20	8	1	8	11	7	19	33	18	-	131
Jeep	4.369	177	266	444	203	229	592	254	272	162	93	123	-	2.815
Kia	13.542	1.306	1.502	1.833	1.917	1.174	2.113	1.600	1.042	916	974	500	-	14.877
Lamborghini	19	1	2	-	1	2	2	-	1	3	1	1	-	14
Land Rover	2.010	79	75	386	235	137	206	128	165	131	50	47	-	1.639
Lexus	143	21	14	12	23	9	38	12	18	5	35	19	-	206
Maserati	47	2	5	8	5	-	11	3	12	15	15	6	-	82
Mazda	156	7	10	17	6	4	9	12	14	13	23	31	-	146
Mercedes-Benz	15.617	977	984	2.243	1.673	1.447	2.133	1.013	1.533	967	700	802	-	14.472
MG	-	-	-	-	19	27	94	21	17	30	65	163	-	436
Mini	1.395	141	57	137	77	66	116	102	144	154	90	131	-	1.215
Mitsubishi	1.237	63	61	138	227	87	77	44	103	132	104	84	-	1.120
Nissan	12.717	1.435	1.682	1.869	683	542	1.237	707	1.524	1.573	763	600	-	12.615
Opel	31.229	1.672	1.708	3.148	2.010	1.857	2.391	1.167	895	1.876	496	2.527	-	19.747
Peugeot	36.589	2.677	2.742	3.485	1.758	2.561	2.544	724	691	2.897	3.508	3.115	-	26.702
Porsche	619	41	43	126	53	42	42	41	35	59	39	33	-	554
Renault	9.339	673	985	955	349	412	680	369	669	641	767	1.807	-	8.307
Seat	11.551	880	1.313	1.882	1.015	1.189	1.486	966	1.183	770	761	474	-	11.919
Skoda	24.175	1.930	2.708	5.204	2.200	2.014	3.521	2.028	1.376	892	517	1.102	-	23.492
Smart	49	-	4	3	-	-	-	-	-	2	-	-	-	9
Ssangyong	650	68	66	103	49	20	45	22	90	57	31	15	-	566
Subaru	673	31	27	84	63	60	85	42	56	106	118	70	-	742
Suzuki	2.977	77	91	419	205	357	441	430	551	566	335	262	-	3.734
Toyota	2.016	111	113	294	173	149	251	147	254	137	202	267	-	2.098
Volkswagen	52.740	4.082	4.286	9.440	5.759	4.506	6.617	4.202	2.785	3.256	3.686	2.690	-	51.309
Volvo	8.200	215	425	660	800	520	880	650	700	650	630	977	-	7.107
<b>GENEL TOPLAM - Grand Total</b>	<b>360.450</b>	<b>23.153</b>	<b>26.137</b>	<b>47.074</b>	<b>28.741</b>	<b>24.763</b>	<b>35.894</b>	<b>22.831</b>	<b>24.777</b>	<b>27.283</b>	<b>24.929</b>	<b>27.498</b>	<b>-</b>	<b>313.080</b>

Firmalar / Firms	2020 Toplam / Total	1	2	3	4	5	6	7	8	9	10	11	12	Toplam / Total
Citroen	5.226	277	533	602	539	321	427	255	337	360	825	1.152	-	5.628
Dacia	4.890	768	650	772	363	372	894	1.016	1.675	625	48	7	-	7.190
Fiat	3.861	100	298	360	178	306	395	165	209	147	64	222	-	2.444
Ford	3.034	60	62	143	89	418	253	181	148	147	46	77	-	1.624
Hyundai	990	125	244	185	123	56	181	108	199	127	184	42	-	1.574
Isuzu	229	13	6	56	68	42	63	48	60	73	72	119	-	620
Iveco	1.851	91	209	316	215	149	270	223	277	275	249	73	-	2.347
Kia	1.900	152	203	256	212	147	141	-	80	68	1	72	-	1.332
Mercedes-Benz	5.175	155	414	637	393	489	875	467	687	413	160	672	-	5.362
Mitsubishi	4.629	402	351	418	464	217	379	227	267	295	215	250	-	3.485
Nissan	544	82	61	53	171	109	121	92	114	87	108	188	-	1.186
Opel	3.067	176	470	528	225	243	314	107	92	478	1.071	816	-	4.520
Peugeot	7.085	519	669	1.318	690	514	705	459	439	812	1.199	1.884	-	9.208
Renault	2.634	269	349	863	424	297	467	154	487	659	430	308	-	4.707
Ssangyong	434	20	30	54	30	28	36	15	23	48	55	61	-	400
Toyota	1.417	238	62	995	942	588	592	368	397	222	340	597	-	5.341
Volkswagen	12.036	626	1.315	1.510	1.366	1.754	2.097	1.071	1.421	774	753	908	-	13.595
<b>GENEL TOPLAM - Grand Total</b>	<b>59.002</b>	<b>4.073</b>	<b>5.926</b>	<b>9.066</b>	<b>6.492</b>	<b>6.050</b>	<b>8.210</b>	<b>4.956</b>	<b>6.912</b>	<b>5.610</b>	<b>5.820</b>	<b>7.448</b>	<b>-</b>	<b>70.563</b>